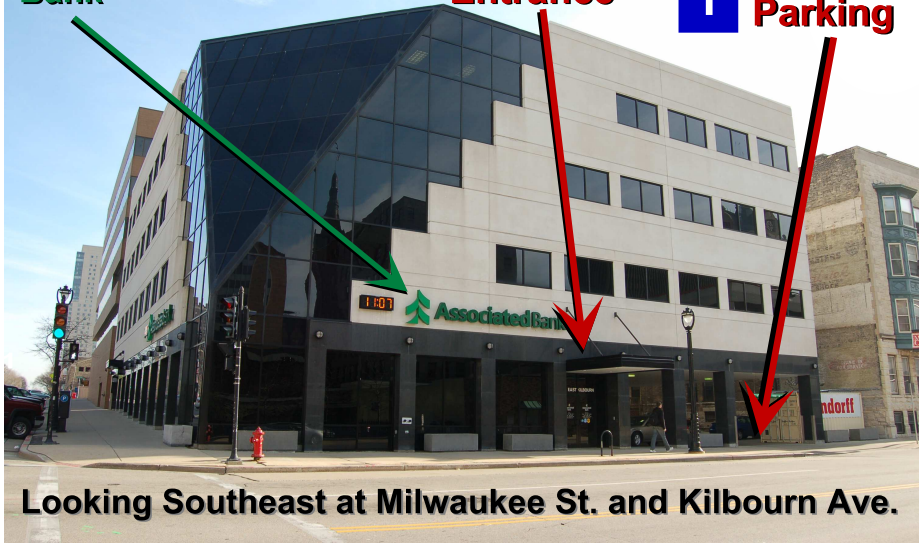


Associated Bank

★ Building Entrance

1 Surface Parking



Looking Southeast at Milwaukee St. and Kilbourn Ave.

We are located on the fourth floor of the Associated Bank building at 401 E. Kilbourn Avenue, which is at the southeast corner of the intersection of Kilbourn Ave. and N. Milwaukee St.

Surface Parking:

Please park on the right side in any of the last five spaces, which are numbered #16-#20

|   |     |
|---|-----|
|   | 20  |
|   | 19  |
|   | 18  |
|   | 17  |
| X | 16  |
| X | X   |
| X | X   |
| X | X   |
| X | X   |
| X | X   |
| X | X   |
| X | X   |
|   | ↓ ↑ |

# ANGERMEIER & ROGERS, LLP

401 E. Kilbourn Ave. Suite 400  
Milwaukee, WI 53202  
(414) 289-9200

PARKING:

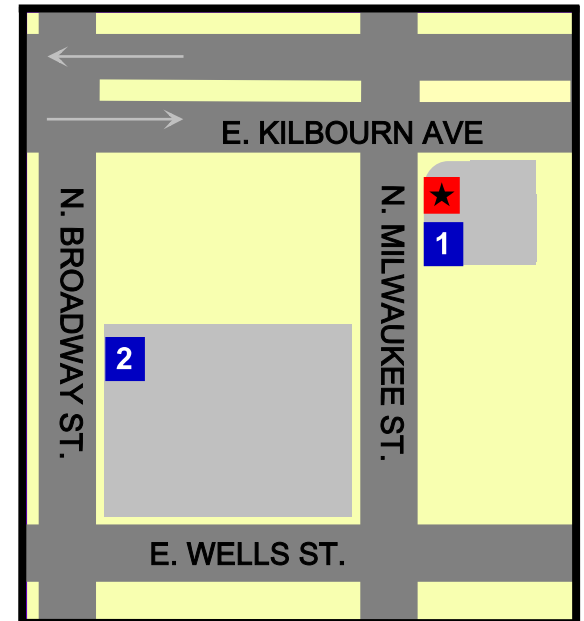
- 1 You may park in our building's surface parking. **Please park on the right side in any of the last five spaces (#16-20 only).**
- 2 If our building's available surface parking is full, please park in the red and white parking structure located one block west of us on Broadway St. between Wells St. and Kilbourn Ave.



Looking Northeast on Milwaukee St. and Wells St.

The alternate parking structure is one block west of our building on Broadway Street, just north of Wells Street.

**VALIDATION For Alternate Parking Ramp:**  
Remember to bring your parking stub in to the office to be validated.



## DIRECTIONS

### COMING FROM WEST

1. Take I-94 east, and continue east onto I-794.
2. Exit at the Van Buren/Jackson St. exit ramp.
3. Turn RIGHT onto St. Paul Ave.
4. Turn RIGHT onto Milwaukee St.
5. Turn LEFT into the parking structure.

### COMING FROM THE NORTH

1. Take I-43 south and exit at the Fond Du Lac/McKinley Ave. exit ramp.
2. Turn slight LEFT onto W. McKinley Ave.
3. Turn slight LEFT onto W McKinley Ave., which becomes E Knapp St.
4. Turn RIGHT onto Milwaukee St.
5. Turn LEFT into the parking structure.

### COMING FROM THE SOUTH

1. Take I-94/I-43 north, following signs toward lakefront.
2. Exit at the Plankinton Ave. exit ramp.
3. Stay to the right of the exit ramp.
4. Exit ramp becomes Plankinton Ave. northbound.
5. Turn RIGHT at Michigan Ave.
6. Turn LEFT onto Milwaukee St.
7. Turn RIGHT into the parking structure.

# ANGERMEIER & ROGERS, LLP

401 E. Kilbourn Ave. Suite 400  
Milwaukee, WI 53202  
(414) 289-9200

- ★ ANGERMEIER & ROGERS
- 1 MAIN PARKING STRUCTURE
- 2 ALTERNATE PARKING STRUCTURE

- |   |                            |
|---|----------------------------|
| A | Marquette University       |
| B | County Courthouse          |
| C | Library                    |
| D | Museum                     |
| E | Police HQ                  |
| F | State Office Building      |
| G | Auditorium                 |
| H | Arena                      |
| I | Bradley Center             |
| J | Midwest Express Center     |
| K | Federal Plaza              |
| L | Grand Avenue Mall          |
| M | Amtrak Station             |
| N | Main Post Office           |
| O | Marcus Center for the Arts |
| P | Pabst Theater              |
| Q | City Hall                  |
| R | Federal Courthouse         |
| S | Summerfest Grounds         |
| T | War Memorial / Art Museum  |
| U | Allen-Bradley              |

